



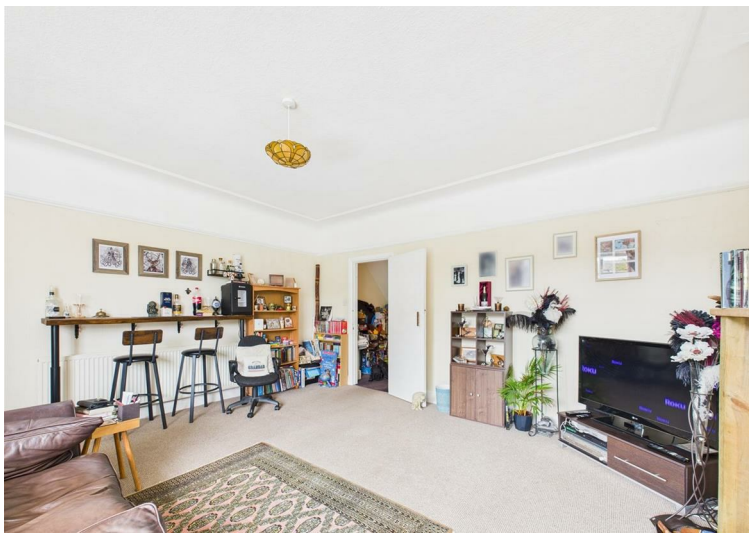
239 Seaview Road, Wallasey, CH45 4PD Offers In The Region Of £209,950

 null  null  null  null D



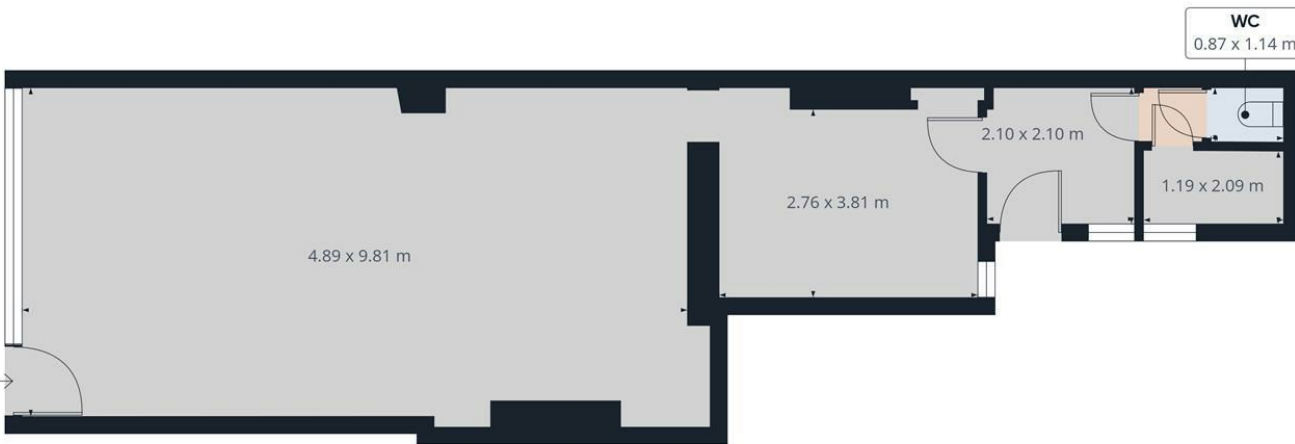
**239 Seaview Road, Wallasey, CH45 4PD
Offers In The Region Of £209,950**







Energy Efficiency Rating		
	Current	Potential
Very energy efficient - lower running costs		
(92 plus) A		
(81-91) B		
(69-80) C		
(55-68) D	58	
(39-54) E		
(21-38) F		
(1-20) G		
Not energy efficient - higher running costs		
England & Wales		EU Directive 2002/91/EC



Approximate total area⁽¹⁾
68.7 m²

(1) Excluding balconies and terraces

Calculations reference the RICS IPMS 3C standard. Measurements are approximate and not to scale. This floor plan is intended for illustration only.

GIRAFFE360

These particulars, whilst believed to be accurate are set out as a general outline only for guidance and do not constitute any part of an offer or contract. Intending purchasers should not rely on them as statements of representation of fact, but must satisfy themselves by inspection or otherwise as to their accuracy. No person in this firm's employment has the authority to make or give any representation or warranty in respect of the property.

93-95 Wallasey Road, Wallasey, Merseyside, CH44 2AQ
T. 0151 638 6313 | E. sales@bakewellhorner.co.uk
<https://www.bakewellhorner.co.uk/>